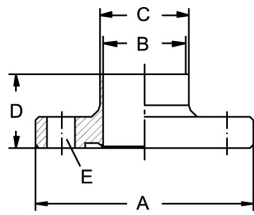
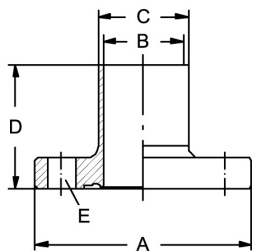
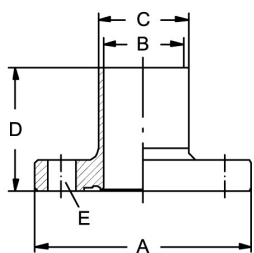


Aseptic-/Hygienic-Flange pipe connections DIN 11853-2 + DIN 11864-2
Art.No
EUR
Art.No
EUR
Flange with notch DIN, DIN 11853-2


DN	A	B	C	D	E			AISI316L-1.4404	
10	54	10	13	24	4xM8x30			472630	37,80
15	59	16	19	24	4xM8x30			472631	38,60
20	64	20	23	24	4xM8x30			472632	39,40
25	70	26	29	24	4xM8x30			472633	40,10
32	76	32	35	24	4xM8x30			472634	40,80
40	82	38	41	24	4xM8x30			472635	42,10
50	94	50	53	24	4xM8x30			472636	45,90
65	113	66	70	24	8xM8x30			472637	59,10
80	133	81	85	26	8xM10x35			472638	85,70
100	159	100	104	26	8xM10x40			472639	100,40
125	183	125	129	28	8xM10x40			472641	136,30
150	213	150	154	28	8xM12x50			472642	173,40

Flange with notch ASME, DIN 11864-2 (AISI316L-1.4404)


DN	A	B	C	D	E			AISI316L-1.4404	
1"	66	22,1	25,4	40	4xM8x30			482003	42,20
1,5"	79	34,8	38,1	45	4xM8x30			482004	56,30
2"	92	47,5	50,8	45	4xM8x30			482005	58,20
2,5"	107	60,2	63,5	54	8xM8x30			482006	81,10
3"	125	72,9	76,2	56	8xM10x35			482007	106,60
4"	157	97,4	101,6	58	8xM10x40			482008	165,90

Flange with notch ASME, DIN 11864-2 (AISI316L-1.4435)


DN	A	B	C	D	E			AISI316L-1.4435	
0,5"	54	9,4	12,7	40	4xM8x30			482101	Enquiry
0,75"	59	15,75	19,05	40	4xM8x30			482102	Enquiry
1"	66	22,1	25,4	40	4xM8x30			482103	Enquiry
1,5"	79	34,8	38,1	45	4xM8x30			482104	Enquiry
2"	92	47,5	50,8	45	4xM8x30			482105	Enquiry
2,5"	107	60,2	63,5	54	8xM8x30			482106	Enquiry
3"	125	72,9	76,2	56	8xM10x35			482107	Enquiry
4"	157	97,4	101,6	58	8xM10x40			482108	Enquiry